

XML IMPORTS



SIGNIFIKANT

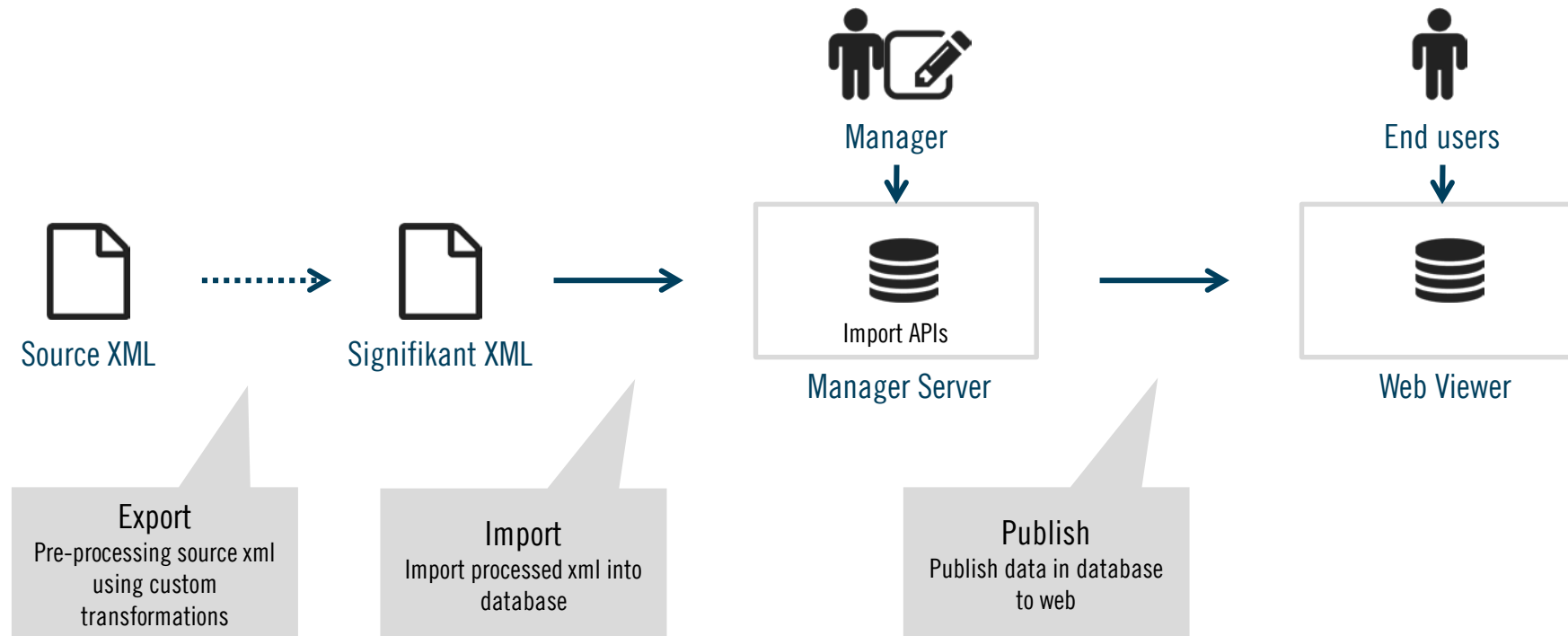
Contents

- Overview of import function
- Different import content

OVERVIEW



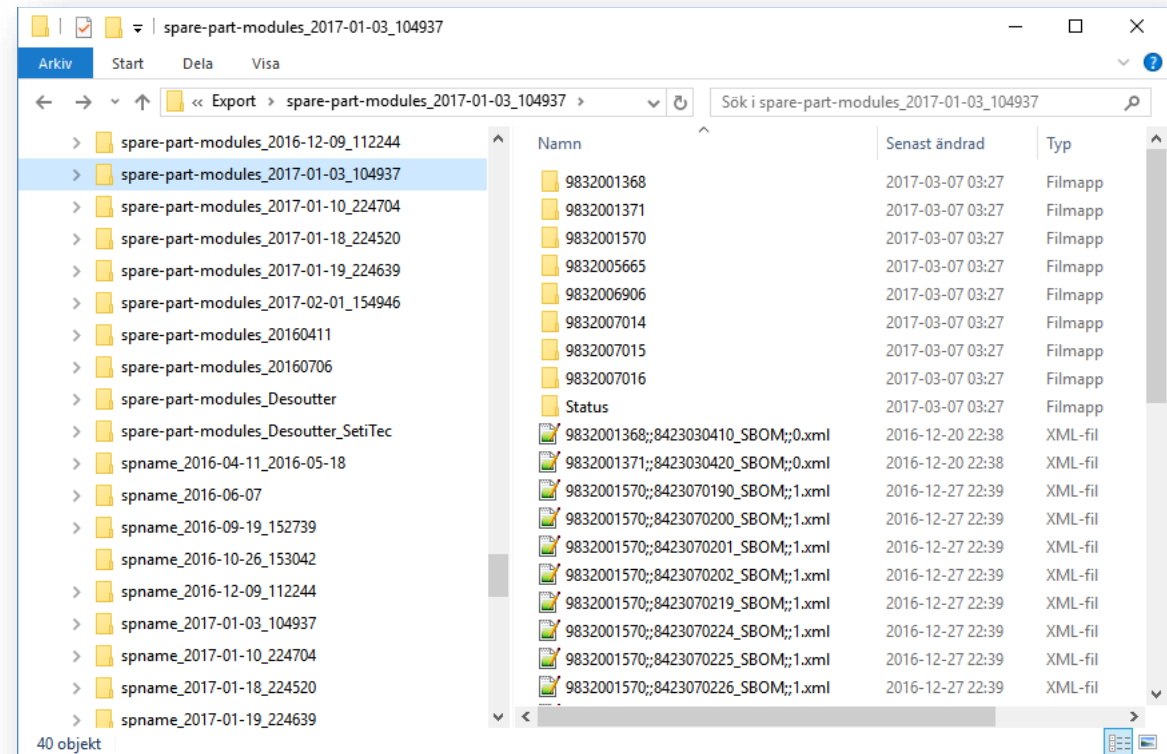
Import process



Process can be managed manually using Managers user interface or by calling REST APIs

Import files

- Exports are placed on disk, normally on D:/Assert/Export/
- Each export is placed in a separate folder according to a defined name standard
- A config file, import.config, defines the name standards and what transformations to apply on each folder
- Transformed xml is placed on disk, normally on D:/Assert/Import



Importing in Manager

- Files in Export and Import folders matching import.config will show in manager import repository.
- Transform and import can be started in the Manager manually.

The screenshot displays the 'Import storage' interface with 188 items. The main table lists catalogues with columns for Order, Catalogues, Transform type, Transform progress, and Import progress. A context menu is open over the row 'product_structure_2016-09-19_152739', showing options: Delete (Del), Transform (Ctrl+T), Import (Ctrl+I), Load (Ctrl+L), and Save list... The right pane shows the 'Transform status' for the selected item, indicating it is finished.

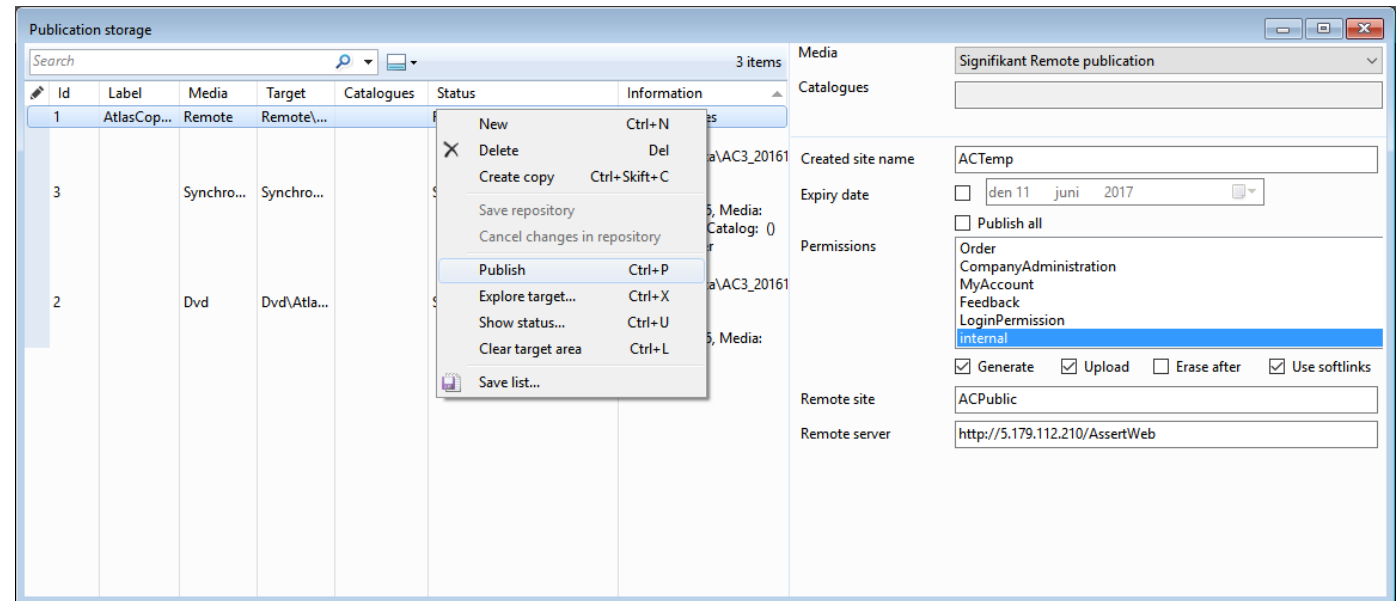
Order	Catalogues	Transform type	Transform progress	Import progress
1	product_structure_20160706	Customize	1/1 [100%] Fi...	-
1	product_structure_2016-09-19_152739	Customize	1/1 [100%] Fi...	-
1	product_structure_2016-10-26_153042	Customize	0/0 [0%] Fi...	-
1	product_structure_2016-11-03_130602	Customize	0/0 [0%] Fi...	-
1	product_structure_2016-12-09_ONE PR	Customize	0/0 [0%] Fi...	1/1 [100%] Finished
1	product_structure_2017-01-03_104937	Customize	[100%] ...	-
1	product_structure_2017-01-10_224704	Customize	[100%] ...	-
1	product_structure_2017-01-18_224520	Customize	[100%] ...	-
1	product_structure_2017-01-19_224639	Customize	9/9 [100%] Fi...	-
1	product_structure_2017-02-01_DELETE ONE	Customize	1/1 [100%] Fi...	1/1 [100%] Finished
1	product_structure_2017-02-01_154946	Customize	120/120 [100...	-
1	product_structure_Desoutter	Customize	1/1 [100%] Fi...	1113/1113 [100%] Finished
1	product_structure_Desoutter_SetiTec	Customize	1/1 [100%] Fi...	1/1 [100%] Finished
2	tech-data_20160411	Customize	5169/5169 [10...	39548/39548 [100%] Finished
2	tech-data_2016-04-11_2016-05-18	Customize	164/164 [100...	1/1 [100%] Finished
2	tech-data_2016-06-07	Customize	2030/2030 [10...	-
2	tech-data_20160706	Customize	-	-
2	tech-data_2016-09-19_152739	Customize	356/356 [100...	21157/169604 [12%] Canceled
2	tech-data_2016-10-26_153042	Customize	-	-
2	tech-data_2016-12-09_112244	Customize	300/300 [100...	1/1 [100%] Finished
2	tech-data_2017-01-03_104937	Customize	3062/3062 [10...	-
2	tech-data_2017-01-10_224704	Customize	369/369 [100...	-
2	tech-data_2017-01-18_224520	Customize	756/756 [100...	-

Transform status
 2017-02-21 15:52:51 product-structure
 Running: False Success: True
 Source:
 Target:
 Message: 1/1 [100%] Finished
 Error:

Import status
 -

Publish in Manager

- Once import is complete, publication process may be started.
- Publish is started using Publication repository.
- Publish process will create database for site or offline based on permissions.



REST APIs

Transform, import and publish may all be started using REST APIs.

APIs for transform - Initiate a transformation and check status by calling

```
http://localhost/AssertServer/api/Publisher/Transform/<folder>/<language>
```

```
http://localhost/AssertServer/api/Publisher/Status/<site>/Transform/<folder>
```

APIs for import - Initiate an import and check status by calling

```
http://localhost/AssertServer/api/Publisher/Import/<site>/Transform/<folder>
```

```
http://localhost/AssertServer/api/Publisher/Status/<site>/Import/<folder>
```

APIs for publish - Initiate publish and check status by calling

```
http://localhost/AssertServer/api/Publisher/Publish/<site>/<publicationlabel>
```

```
http://localhost/AssertServer/api/Publisher/Status/<site>/Publish/<publicationlabel>
```

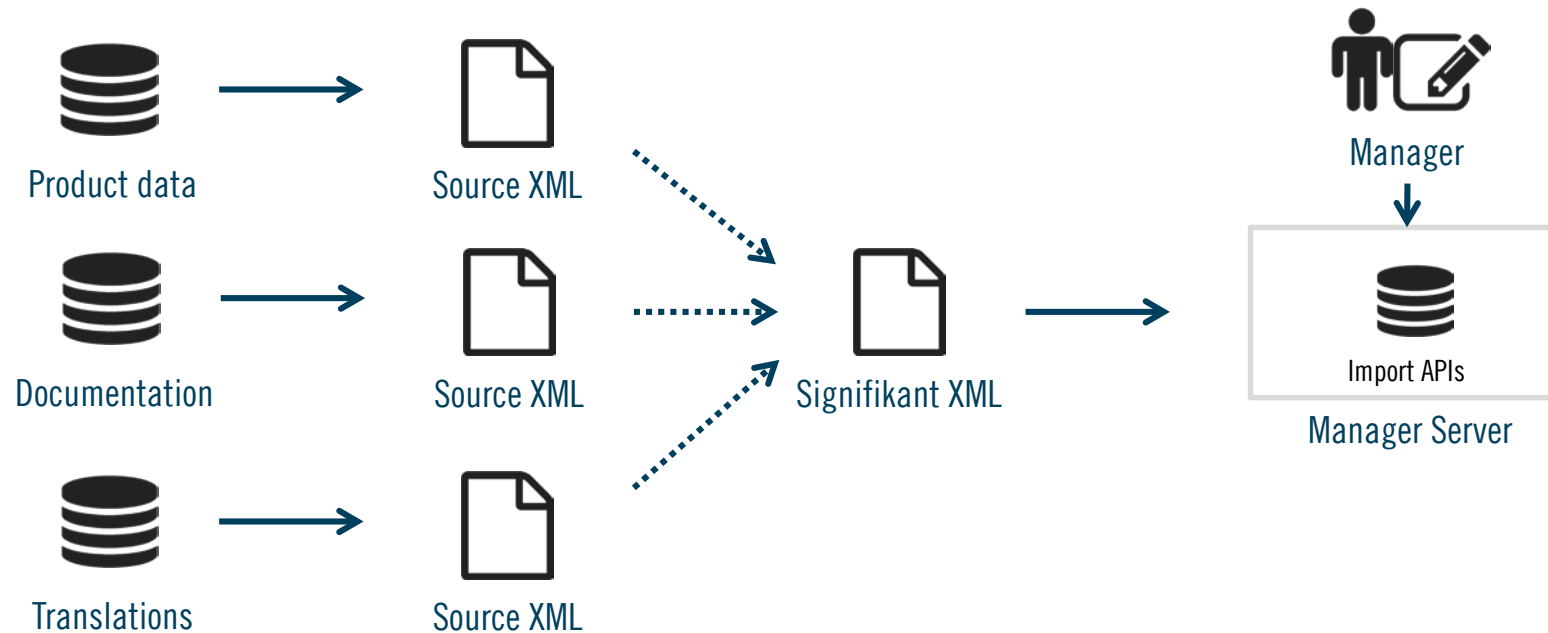

CONTENT

Different content types



SIGNIFIKANT

Information sources



Information from these sources are currently being imported. New sources will be added for new content types.

Signifikant Simplified XML – overview of import formats

Sample source	Export folder	Export files	Content
PLM solution	Illustrations_<x>	Illustrations_<x>.xml <dir>/img.svg	Images and illustrations (presentation) described as xml. Image files in a sub directory.
PLM solution	Parts_<x>	Parts_<x>.xml	Parts (presentation) definitions as xml. References to images. References to catalogues if applicable.
PLM solution	Assemblies_<x>	Assemblies_<x>.xml	Spare part assemblies (presentation) defined as xml; name, id:s, type, specifications and part lists. Reference to illustrations. References to catalogues if applicable.
PLM solution	ContentSet_<x>	ContentSet_<x>.xml <dir>/file.ext	Content sets (presentation). References to catalogues if applicable.
PLM solution	Catalogues_<x>	Catalogues_<x>.xml	Catalogues (presentation) with it's structures and image references. References to presentations if applicable.

Signifikant Simplified XML – overview of import formats

Sample source	Export folder	Export files	Content
CMS	Documents_<x>	Document_<x>.xml <dir>/<x>.ext	Documents presentation with name, and meta data for search. List which pdf:s match which languages. References to catalogues if applicable. Document files located in sub folder.
Translations	Xliff	Xliff.xml	Translations as xml based on the xliff standard.
Translations	Text	Text.xml	Translations as xml based on a simple xml format.

IMPORT STRATEGY



SIGNIFIKANT

Import strategy

- Only one import/publish at a time, serial order.
- Import order need to be followed.
- If a presentation which is not existing is referred, an empty presentation will be created. Thus content can be added to that presentation at a later stage.