

RELEASE 4.5

News in this release



SIGNIFIKANT

New search configuration options

Search configurability has been improved and now includes

- Define custom categories apart from the standard part, catalogue, document etc
- Navigate to search result by pressing enter
- Allow to select specifications as “facets”
- Show facets as columns in search result.
- Allow to display if catalogue has content already in search result.
- Filter on facets.

DOMETIC window CALL CENTRE BULLETINS CONTACT ORDER D.DEMO

START PAGE

Show results for 1 - 20 of 180 results for "window" Sort

PNC	Part description	Model on label	SKU number	Content
W999000000	Window S4			
W999000001	Window S4			
W999000002	Window S4			
W999000003	Window S4			
W999000004	Window S4			
W999000005	Window S4			
958500156	FL1600	Freshlight1600	9102900207	
958500167	FL2200	Freshlight2200	9102900165	
9104115561	S4Windows	S4Windows	9104115561	
9104115553	S4Windows	S4Windows	9104115553	
9104115554	S4Windows	S4Windows	9104115554	
9104115556	S4Windows	S4Windows	9104115556	
9104115558	S4Windows	S4Windows	9104115558	
9104115559	S4Windows	S4Windows	9104115559	
9104115560	S4Windows	S4Windows	9104115560	
9104115545	S4Windows	S4Windows	9104115545	
9104115547	S4Windows	S4Windows	9104115547	
9104115548	S4Windows	S4Windows	9104115548	
9104115549	S4Windows	S4Windows	9104115549	
9104115552	S4Windows	S4Windows	9104115552	

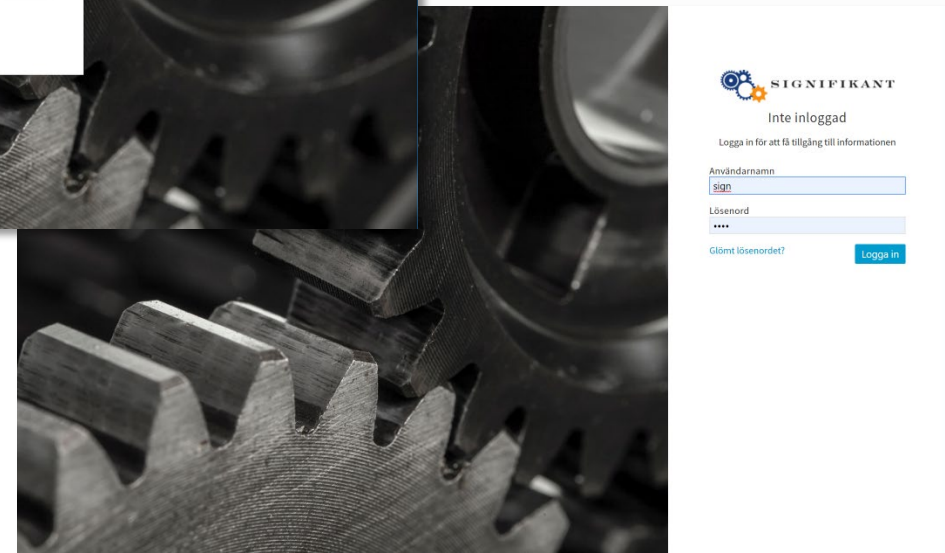
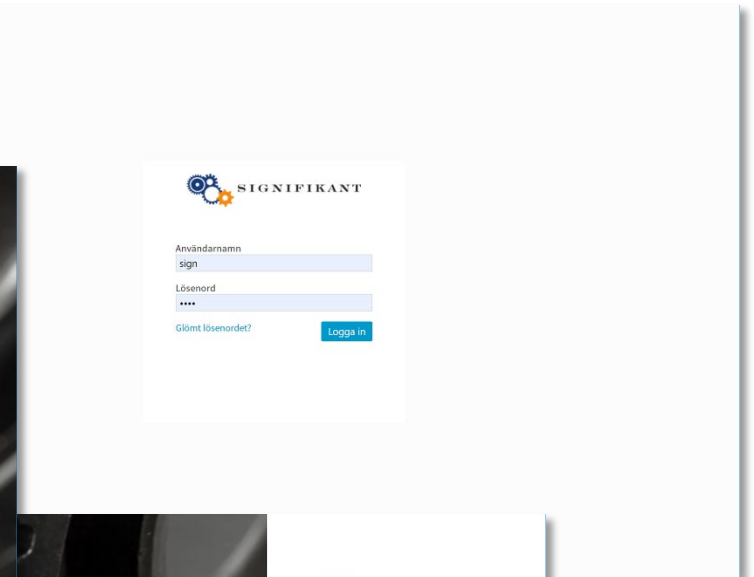
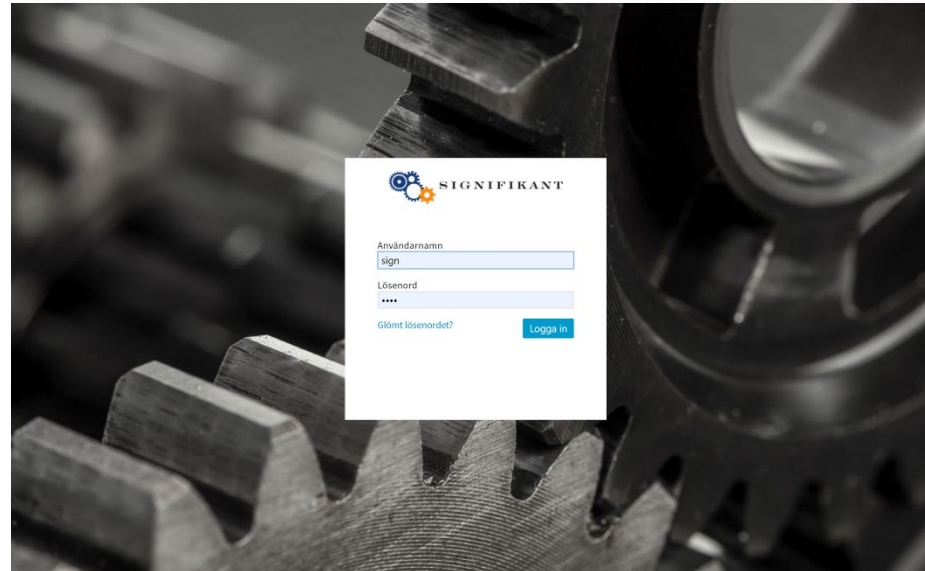
1 2 3 4 5 6 ... 9 >

20 50 100

New login page design options

Login page can now be configured with a background image. A total of three options are possible:

- Centred login
- Right side adjusted login
- Classic login with no image



Grouping options in tables

Tables may now be grouped. This may be useful when e.g. presenting serial number grouped spare part information.

Atlas Copco ServAid | atlascopco.com

8436012012

Start page / Electric Assembly Tools / Screwdrivers / Tensor ES Angle / 8436 0120 12 ETV ES21-12-06 / Spare Parts

Accessories
Spare Parts
Service Kits
Service Tools
Documentation
Dimensional drawings

Sort

D9371191 -

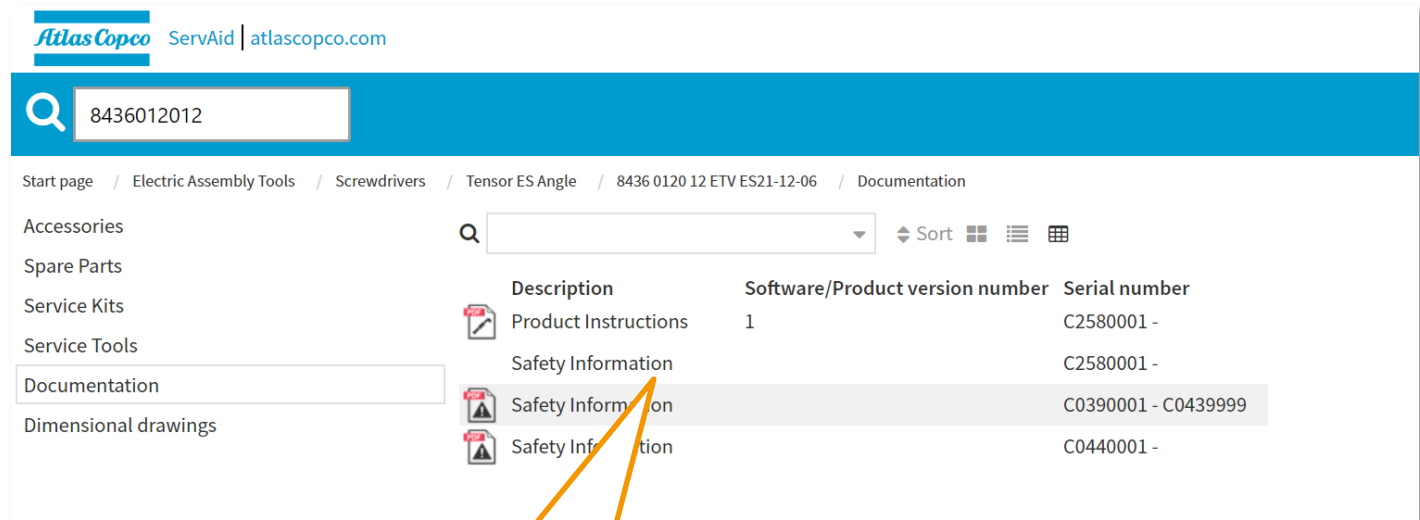
- Handle and motor s/n D9371191 -
- Angle head s/n D9371191 -
- Cap nut s/n D9371191 -
- Cap nut s/n D9371191 -
- Cap nut s/n D9371191 -
- Cap nut s/n D9371191 -
- Gear s/n D9371191 -

C2580001 - C9371190

- Handle and motor s/n C2580001 - C9371190
- Angle head s/n C2580001 - C9371190
- Cap nut s/n C2580001 - C9371190
- Cap nut s/n C2580001 - C9371190
- Gear s/n C2580001 - C9371190

Documents as references to external documents using URL

Documents may now also be references to external places using URLs. The documents may still handle different languages, have metadata for search and presentation etc.



The screenshot shows the Atlas Copco ServAid website interface. The search bar contains the ID '8436012012'. The breadcrumb trail indicates the path: Start page / Electric Assembly Tools / Screwdrivers / Tensor ES Angle / 8436 0120 12 ETV ES21-12-06 / Documentation. A table of search results is displayed with columns for Description, Software/Product version number, and Serial number.

Description	Software/Product version number	Serial number
Product Instructions	1	C2580001 -
Safety Information		C2580001 -
Safety Information		C0390001 - C0439999
Safety Information		C0440001 -

URL link to eg external server

Search in Manager

It is now possible to search presentations in Manager. From the search result it is possible to navigate to the presentation or the storage with the presentation selected. The search result may be filtered as well as exported to a file.

The screenshot shows the Signifikant Manager application window with a search for 'cover' resulting in 2846 items. The table below represents the visible data in the search results.

Id	Properties	Type	Identity	Name	Specification
72747	Name	Section	958500217 P...	Cover	Pnc [String] 958500217, Pnc/Elc/ProductionDate [String] 958500217/00/20141031
17890	Name	Part	289038050	cover gas burn...	Partno with check digit [String] 2890380500, Pricing field [String] 1001, PartType [String] SP, Discount group [String] 801, Product Area [String] 13, Part Group [String] 1309, Model Fami...
17142	Name	Part	241333832	cover ledge fre...	Partno with check digit [String] 2413338324, Extra description [String] short, Dometic factory (entity) code [String] DE111A, Pricing field [String] 1001, PartType [String] SP, Discount gro...
17081	Name	Part	241333842	cover ledge fre...	Partno with check digit [String] 2413338423, Extra description [String] long, Dometic factory (entity) code [String] DE111A, Pricing field [String] 1001, PartType [String] SP, Discount gro...
87097	Name	Section	958500227 P...	Cover	Pnc [String] 958500227, Pnc/Elc/ProductionDate [String] 958500227/00/20140724
95016	Name	Section	958310511 N...	Cover	Pnc [String] 958310511, Pnc/Elc/ProductionDate [String] 958310511/00/
56979	Name	Section	958500250 P...	Cover	Pnc [String] 958500250, Pnc/Elc/ProductionDate [String] 958500250/00/20140220
71247	Name	Section	958500226 P...	Cover	Pnc [String] 958500226, Pnc/Elc/ProductionDate [String] 958500226/00/20110926
61095	Name	Section	958500229 P...	Cover	Pnc [String] 958500229, Pnc/Elc/ProductionDate [String] 958500229/00/20140320
238143	Name	Kit	289078619	cover ledge	Pricing field [String] 1001, PartType [String] SP, Discount group [String] 801, Product Area [String] 13, Part Group [String] 1309, Model Family [String] 130901, Model [String] 130901001,...
16921	Name	Part	241333862	cover ledge do...	Partno with check digit [String] 2413338621, Pricing field [String] 1001, PartType [String] SP, Discount group [String] 801, Product Area [String] 13, Part Group [String] 1309, Model Fami...
98718	Name	Section	958310501 N...	Cover	Pnc [String] 958310501, Pnc/Elc/ProductionDate [String] 958310501/00/
70303	Name	Section	958500237 P...	Cover	Pnc [String] 958500237, Pnc/Elc/ProductionDate [String] 958500237/00/20160307
22112	Name	Part	289012220	cover handle i...	Partno with check digit [String] 2890122209, Pricing field [String] 1001, PartType [String] SP, Discount group [String] 801, Product Area [String] 13, Part Group [String] 1309, Model Fami...
18154	Name	Part	292408911	cover bottom	Partno with check digit [String] 2924089119, Dometic factory (entity) code [String] DE111A, Pricing field [String] 1001, PartType [String] SP, Discount group [String] 801, Product Area [...]
93820	Name	Section	958500205 P...	Cover	Pnc [String] 958500205, Pnc/Elc/ProductionDate [String] 958500205/00/20120319
124932	Name	Section	958500341 P...	Cover	Pnc [String] 958500341, Pnc/Elc/ProductionDate [String] 958500341/00/20141028
22187	Name	Part	241326151	cover cable lig...	Partno with check digit [String] 2413261518, Dometic factory (entity) code [String] DE111A, Pricing field [String] 1001, PartType [String] SP, Discount group [String] 801, Product Area [...]
135795	Name	Section	958500220 P...	Cover	Pnc [String] 958500220, Pnc/Elc/ProductionDate [String] 958500220/00/20140716
238142	Name	Kit	289078618	cover ledge	Pricing field [String] 1001, PartType [String] SP, Discount group [String] 801, Product Area [String] 13, Part Group [String] 1309, Model Family [String] 130901, Model [String] 130901001,...
17796	Name	Part	295122105	cover cap	Partno with check digit [String] 2951221056, Extra description [String] S0510R80B, Dometic factory (entity) code [String] DE111A, Pricing field [String] 1001, PartType [String] SP, Discou...
57131	Name	Section	958500327 P...	Cover	Pnc [String] 958500327, Pnc/Elc/ProductionDate [String] 958500327/00/20140717
236546	Name	Part	289078619	cover ledae	Pricing field [String] 1001, PartType [String] SP, Discount group [String] 801, Product Area [String] 13, Part Group [String] 1309, Model Family [String] 130901, Model [String] 130901001,...

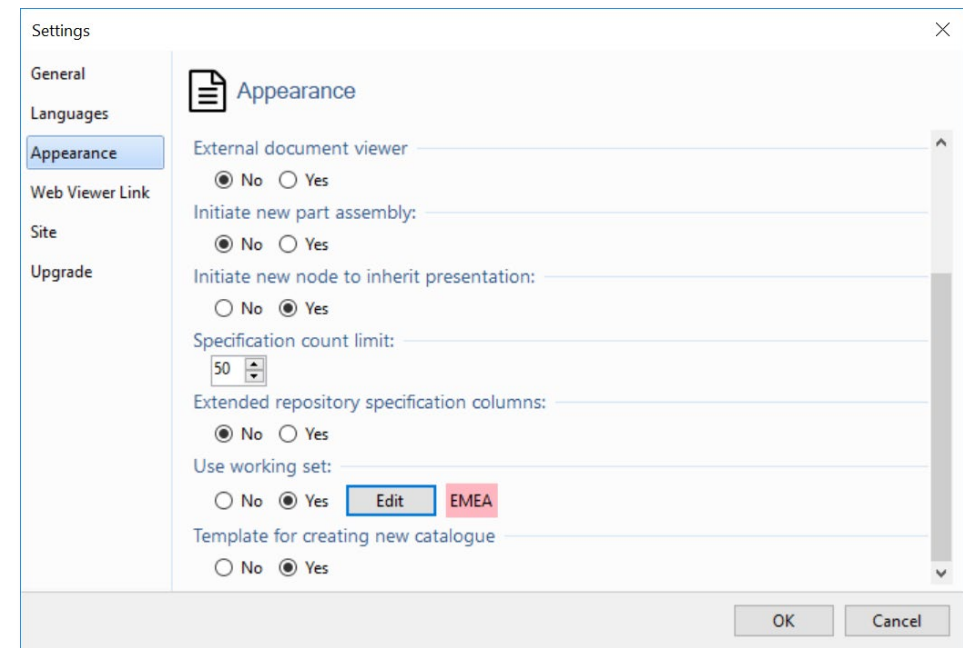
Working sets

A working set is a sub set of all data in the database. The purpose is to create a sub set of the total data to reduce loading times of storages.

Working set is defined by several specifications.

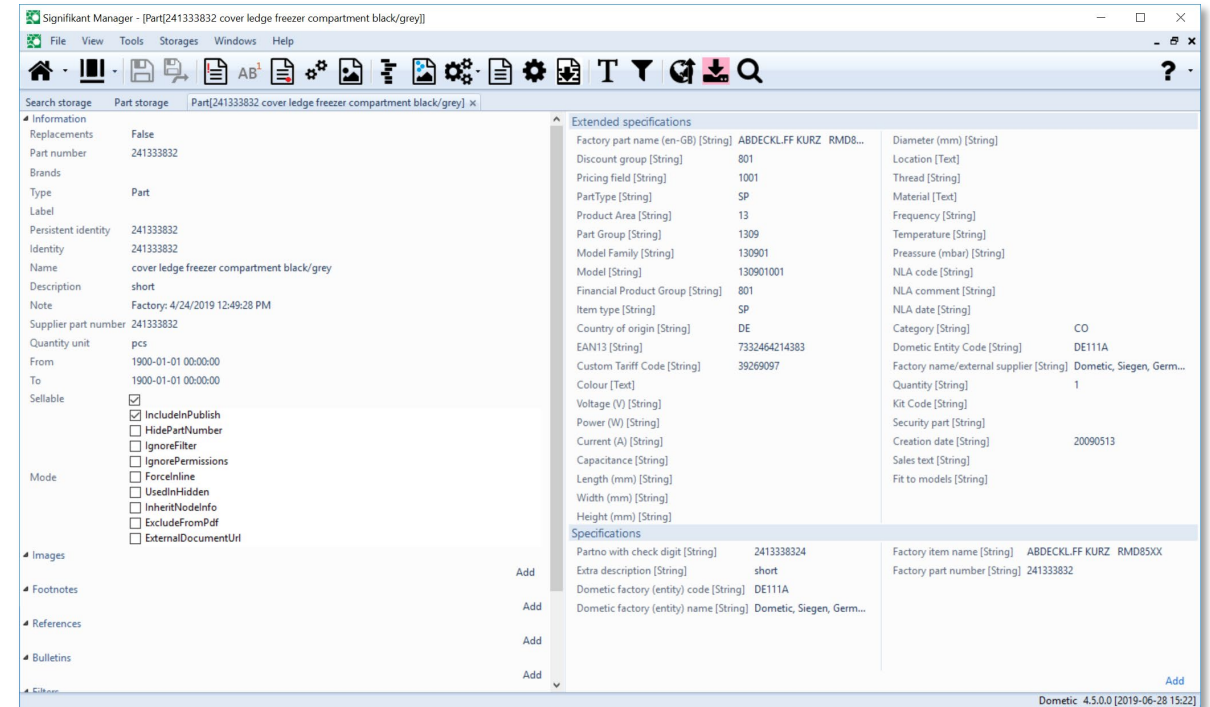
Catalogues which has any of the defined specifications and all their related content will be the defined working set.

E.g. a selection of catalogues has region = EMEA. Defining a working set for EMEA will then limit catalogue-, part assembly-, part- and document storages to information used in EMEA.



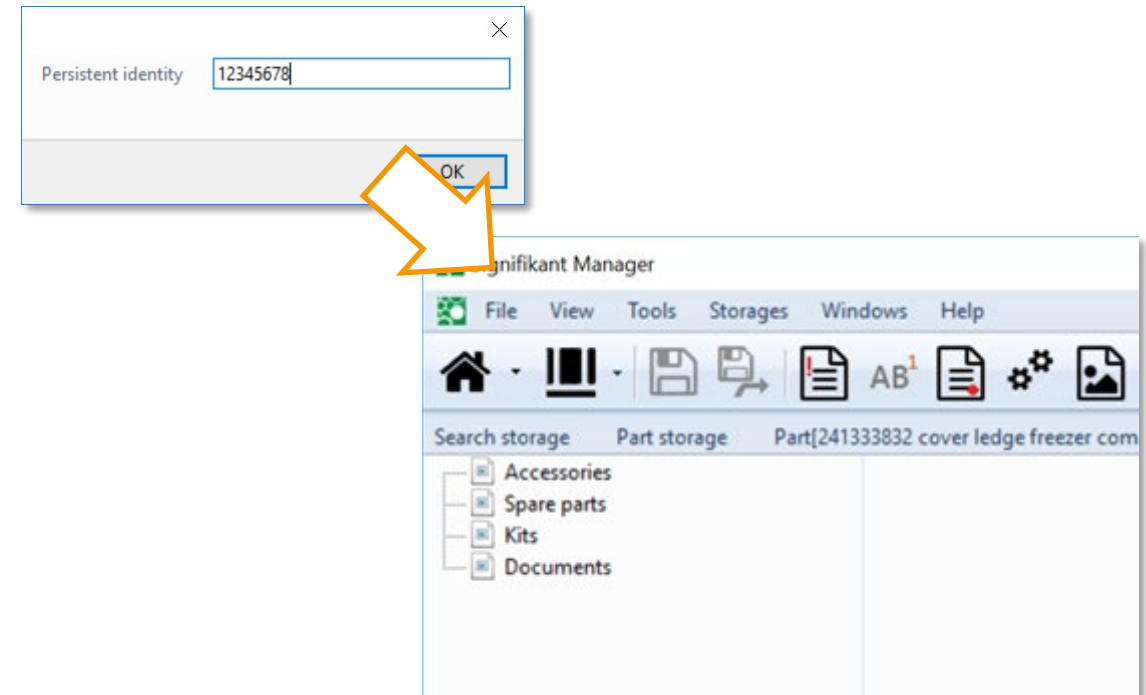
Part edit in new window

Parts can now be edited in its own window. The part window can be accessed by double clicking a search result, a part in part storage or a part in a section or catalogue.



Template when creating new catalogues

It is now possible to define a template for new catalogues through configuration. When new catalogues are created a set of nodes will be generated automatically in the catalogue.



Actions on multiple items

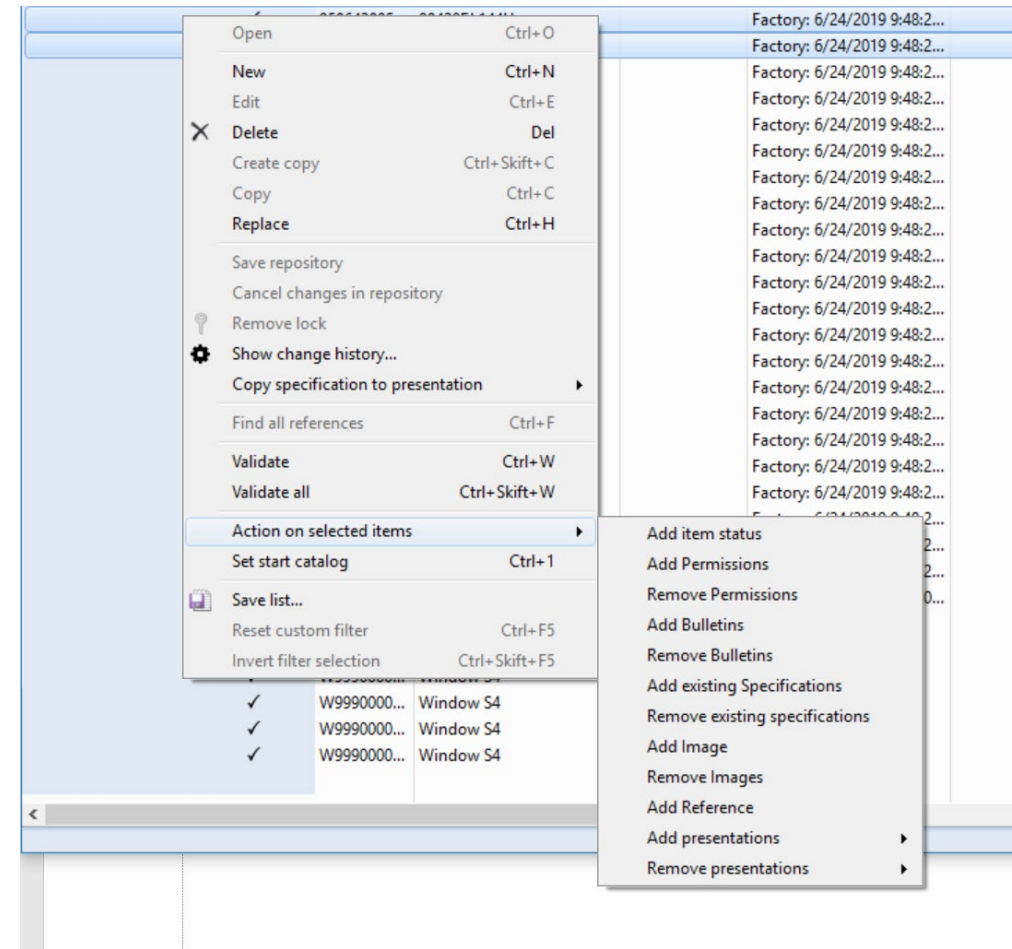
It is now possible to add even more selected information on many items at the same time in the Manager tool.

The following things can be managed on several items:

- Adding and removing specifications
- Adding references
- Adding and removing presentations

Since before the following objects can be added

- Adding item status
- Adding and removing permissions
- Adding and removing bulletins
- Adding and removing images (on parts only)



More things...

Manager

- Optimizations when having large databases
- Copy specifications from product to presentation in product
- Limit publish with specification

Web Viewer

- Allow to save orders in Signifikant database also when having external providers
- Allow to configure order type and delivery options
- Allow to choose separator when importing parts to order
- Profile.config snippets to make handling of multi-server installations easier