

RELEASE 4.2

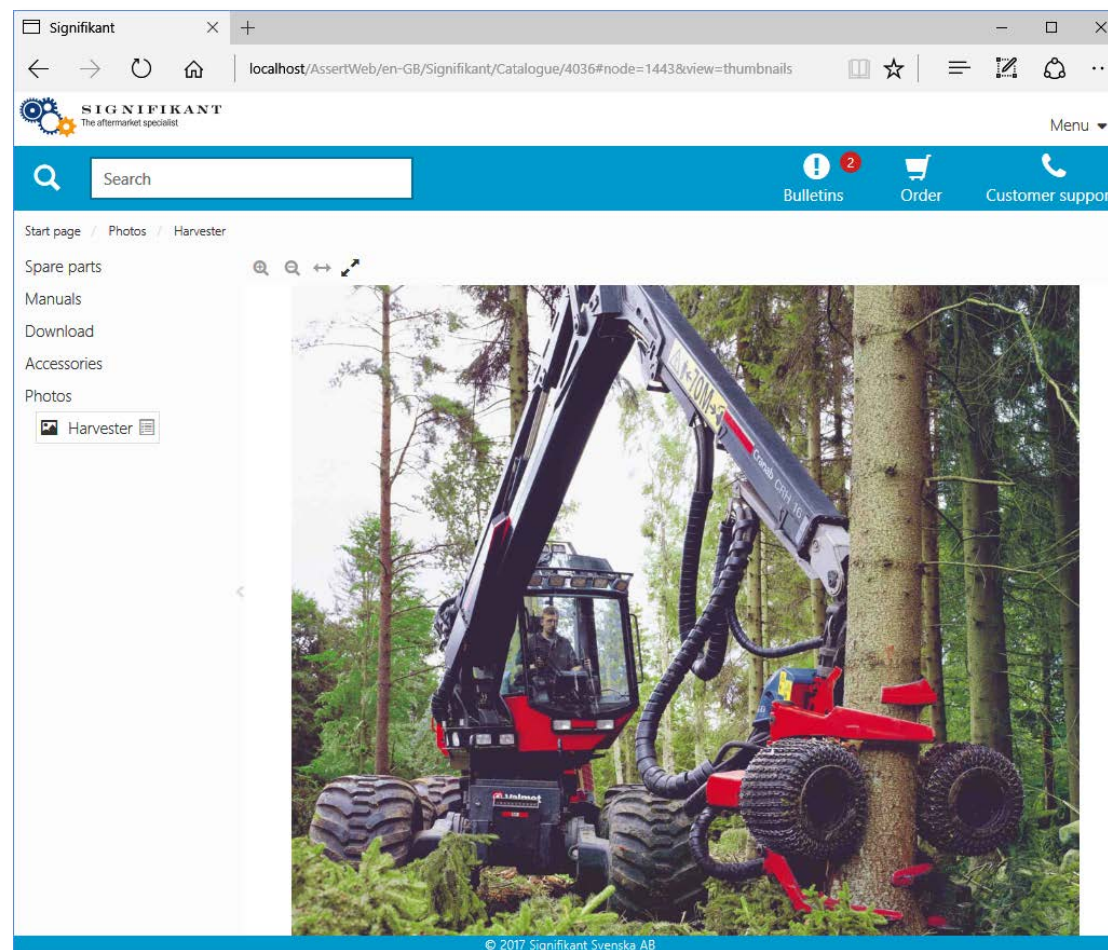
News in this release



SIGNIFIKANT

Illustrations in web viewer

Illustrations can be added to the structure of a catalogue. A thumbnail will be visible in the web viewer and user can choose to view the full image.

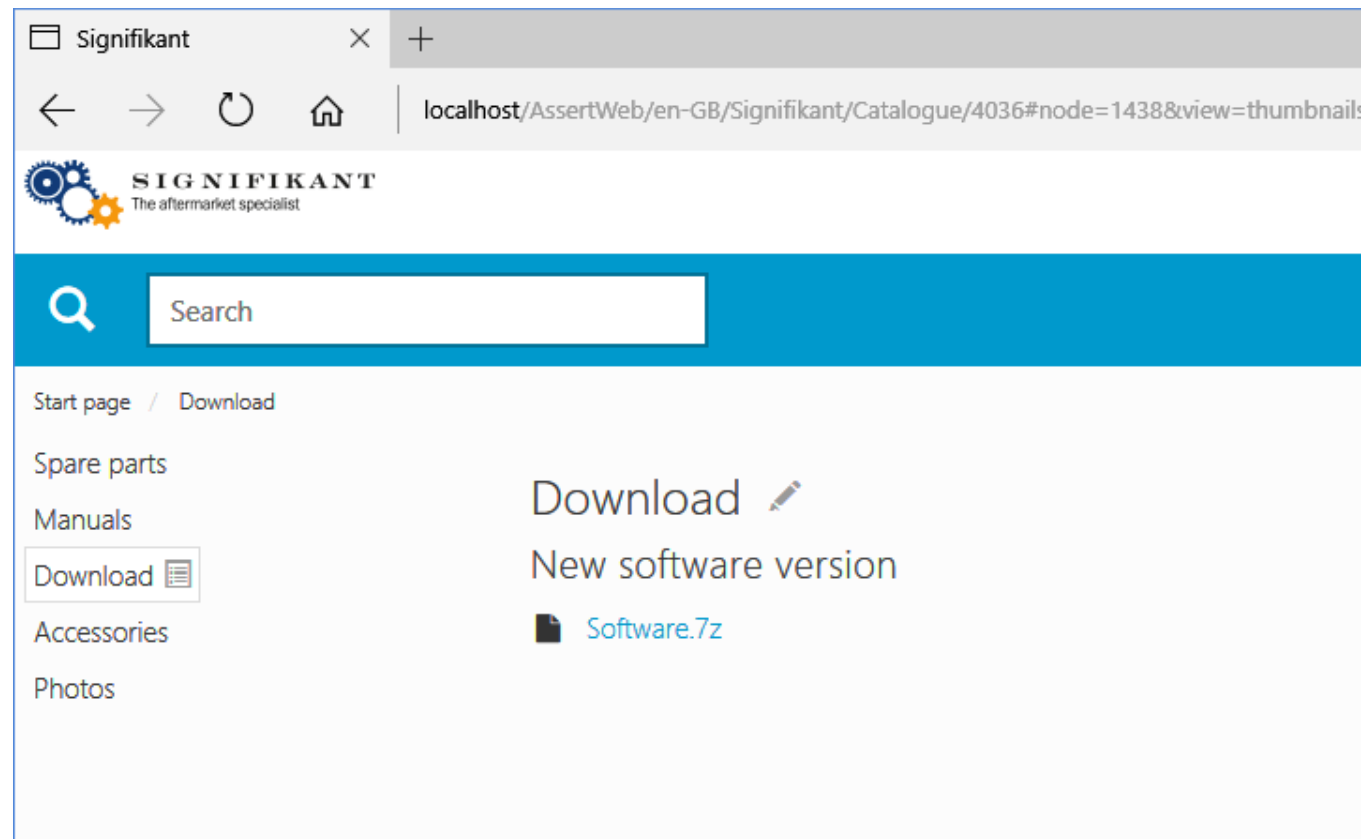


Content sets

It is now possible to distribute downloadable files, e.g. software downloads or cad drawings, using the web viewer.

To support this, Content set, a new presentation type, is added.

- Handling Content set as a repository in the Manager.
- Importing Content sets as xml using Signifikant Simplified XML.
- Viewing Content sets in the Web Viewer.




Search


Search can now be configured to search in current catalogue or in full database.


Part list can be filtered in part assemblies to make it easier to find parts when having long part lists.

Search in all **Search in OS 600**

Part 5 / 11 (view all)



 Point 50mm
Description Points Number 155027

 Point 80 mm
Description Points Number 155028

 Tip 210mm
Description Points Number 172326

Part assembly

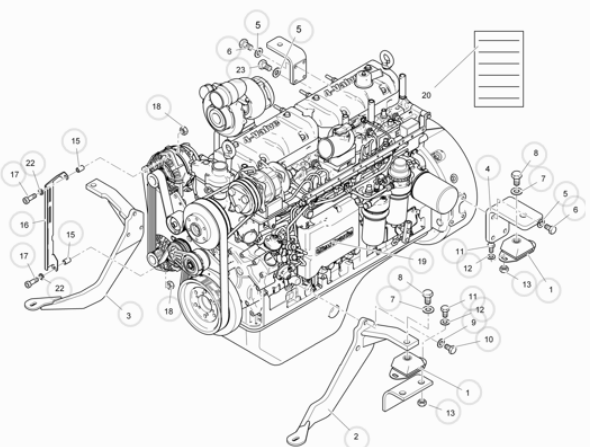
Points

112000
Engine installation  

> Used in

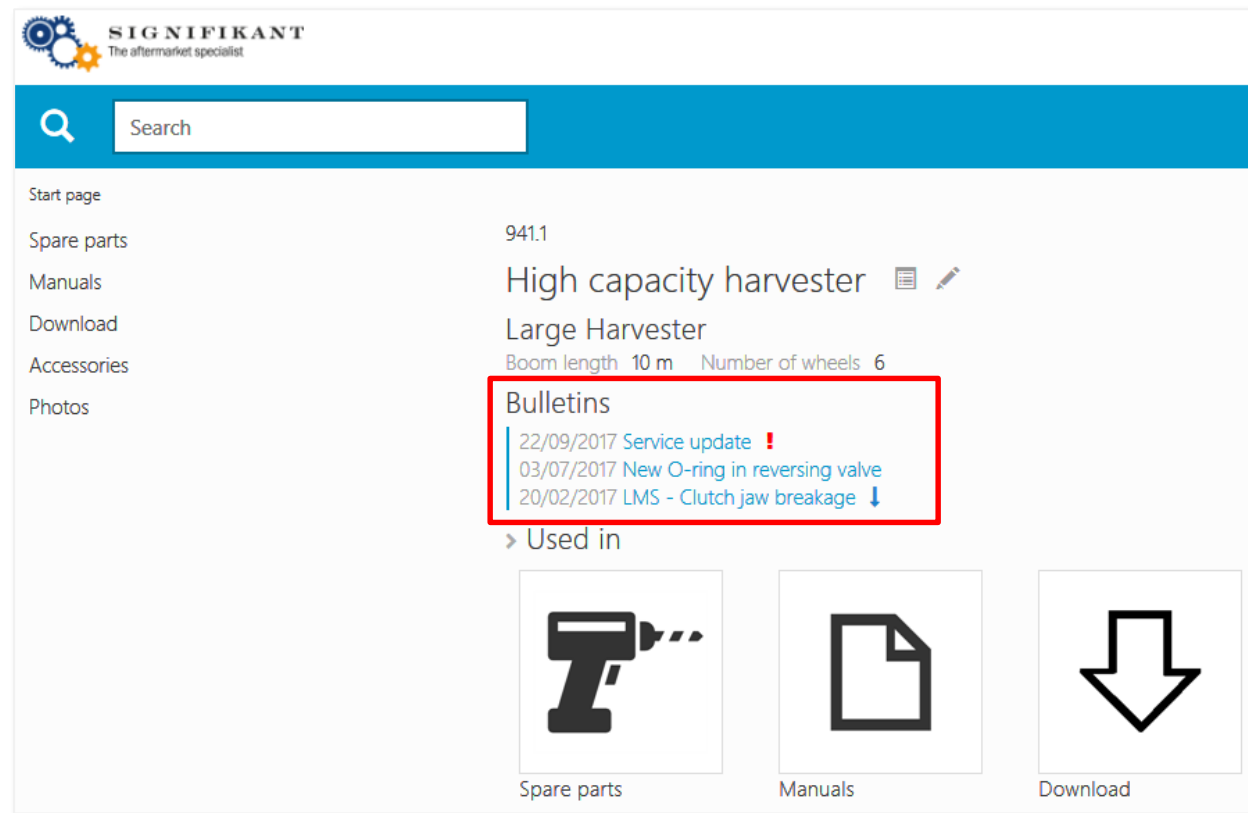
95

Id	Quantity	Number	Name	Remark
6	6	955342	Bolt	Test
7	4	955903	Washer	
8	4	955386	Bolt	
11	8	955366	Bolt	
17	2	955346	Bolt	
23	2	955343	Bolt	



Priority on bulletins



It is now possible to set a priority on bulletins, 1 to 3. Depending on priority a different icon may be used to indicate the priority of the bulletin.





SIGNIFIKANT
The aftermarket specialist

Search




Start page
Spare parts
Manuals
Download
Accessories
Photos

9411
High capacity harvester  
Large Harvester
Boom length 10 m Number of wheels 6

Bulletins

- 22/09/2017 Service update 
- 03/07/2017 New O-ring in reversing valve
- 20/02/2017 LMS - Clutch jaw breakage 

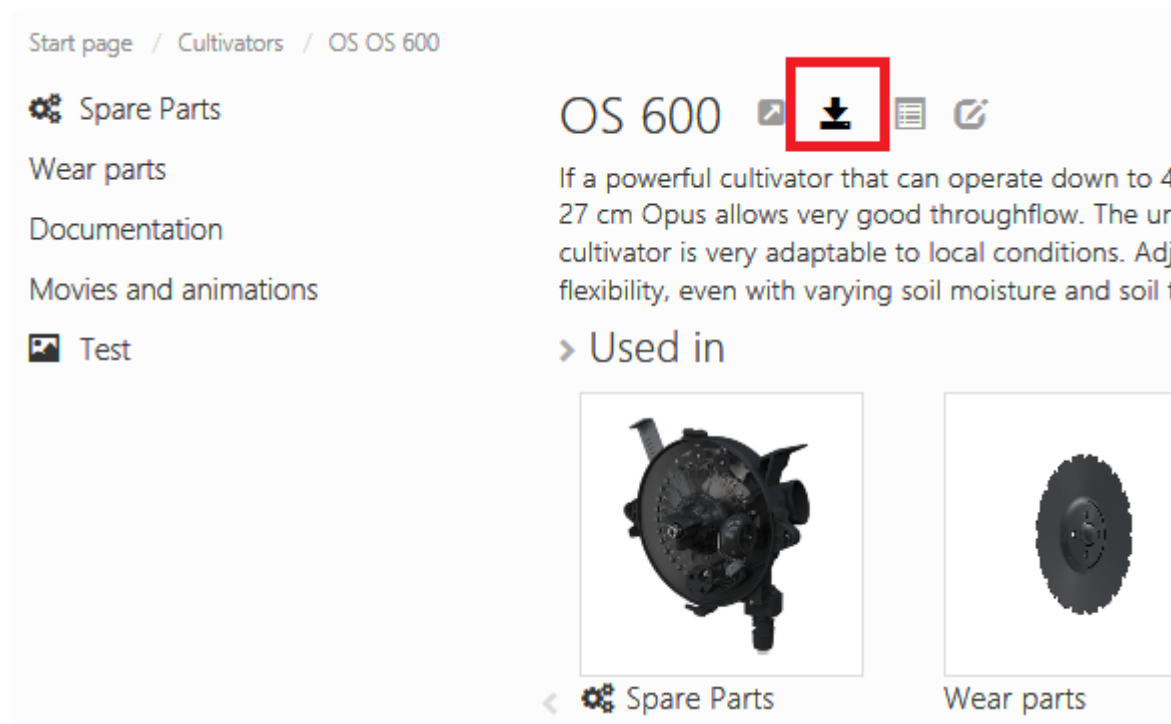
> Used in

 Spare parts  Manuals  Download

Full catalogue pdf

It is now possible to download a pdf for the entire product on the product page of the web viewer.

Pdf report template may be configured*.



* Pdf configuration is an add-on service

Better on mobile

My account and My orders are now adjusted to fit better on smart phone screens.

Different logo can be used depending on media.

Avatar name is shortened on smart phone screens.

The image displays two screenshots of the Signifikant mobile application interface. The left screenshot shows a list of orders with the following details:

Order ID	Total price
2017-0817-214203	\$9.90
2017-0815-224535	\$12.54
2017-0815-224209	

The right screenshot shows a search or filter screen with a dropdown menu for 'Sweden' and a checkbox for 'Show Reseller based on country'. The Reseller field is currently empty.

Filter engine update

Filter engine* can now handle filters specific to catalogues and filters on part rows.

The screenshot shows a web browser window displaying the Väderstad spare parts catalog. The search bar contains '600' and the product is identified as 'OS OS 600'. The main content area features a 3D exploded view of a red frame assembly with numbered callouts (1-21) pointing to various components. To the right of the 3D view is a table titled 'Used in' with a search filter set to 'Filter'. The table lists 21 parts with their respective quantities and names.

Id	Quantity	Number	Name
1	1	172566	Frame
2	1	172567	Frame
3	1	172569	Frame
4	2	54001000091	Circlip
5	2	52001000041	Washer
6	2	458206	Plate
7	8	51010800021	Nut
8	2	458221	Spring
9	2	459103	Pin
10	2	53001005091	Spring pin
11	1	51010800021	Nut
12	2	441343	Spring
13	2	459107	Pin
14	2	459047	Nut
15	6	50000602021	Screw
16	1	449847	Plate
17	2	449038	Cover
18	4	467862	Slide Bearing
19	4	51023000011	Nut
20	4	52003000041	Washer
21	10	446844	Sleeve


* Filter engine is an add on module.

Service level on part rows

Manager now supports adding specifications for service level.

The service level will be displayed on the part row of a part assembly.

General view

 Parts without ordering number are not delivered separately for technical reasons. The use of other than genuine Desoutter replacement parts may result in decreased tool performance and increased maintenance and may, at the company option, invalidate all warranties.

> Used in

Ref.no.	Qty	Ordering no.	Description	Service level
38	1	STSE6078	S/A Container 36ml NEW 2	Very high
37	1	STSE4768	STSE4768 - S/A PRIMING LUBRICATION	
36	1	STSE2718	STSE2718 - S/A CAPILLARY Ø0.25 lg 225 blue	
35	1	STSE1294	STSE1294 - S/A PICA-PAO Ø17 - 3 ROLLERS 0.10mm	
34	1	STSE1288	STSE1288 - REDUCTION GEAR EMPTY	
33	1	STSE1258	STSE1258 - S/A RA HEAD PICAPAO THREADED	
32	1	STSE1235	STSE1235 - S/A FEED GEAR 0,095 MM/TR	
31	1	STSE1224	STSE1224 - AUTOM. COLLET VACCUM ST1200	
30	1	STSE1212	STSE1212 - S/A REDUCTION GEAR ST1200	



Google tags

Signifikant Web Viewer now has tags to allow Google to crawl catalogues and parts.*

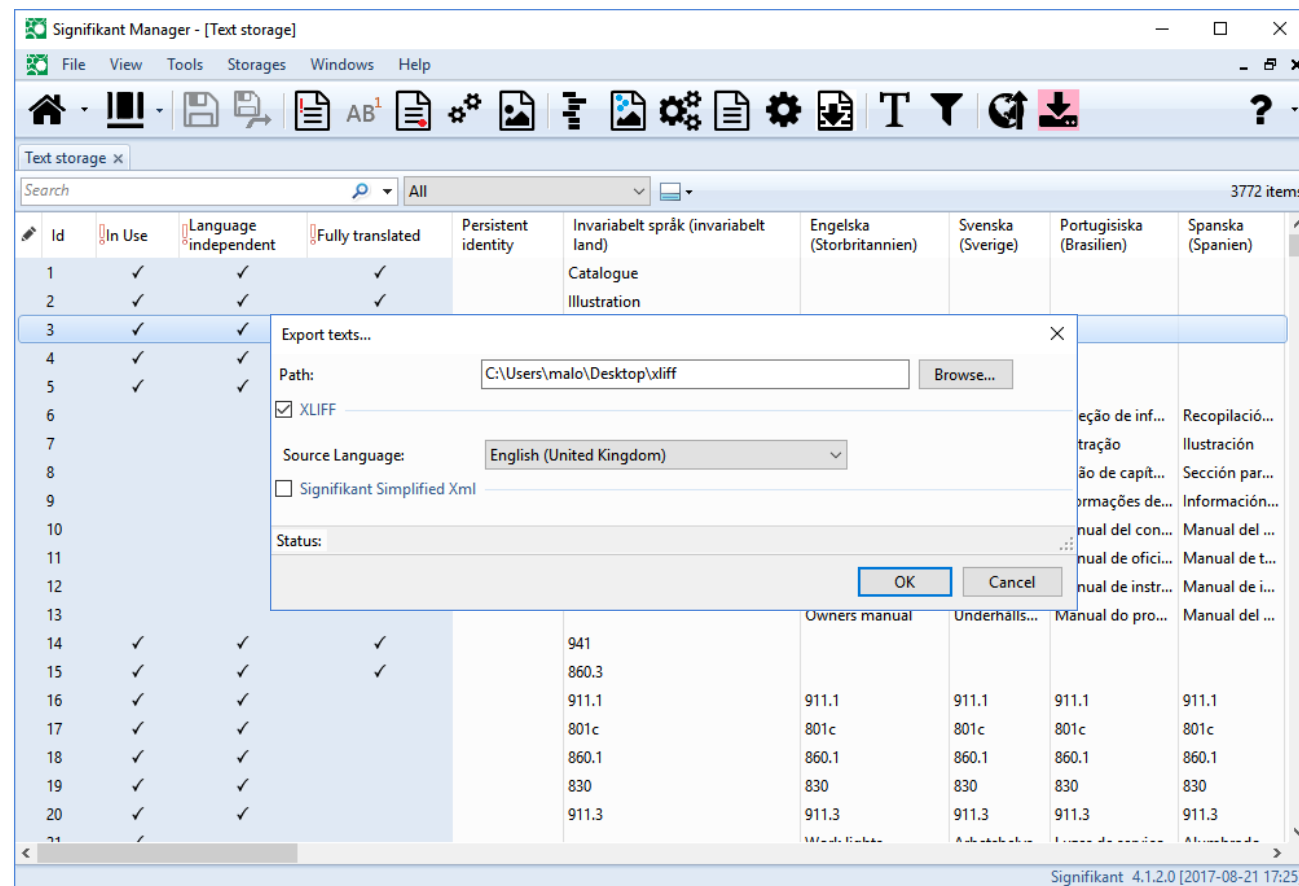
Example of usage is to allow Google to crawl product name and number.



* Configuring Google search requires configuration, which may be an add on service.

XLIFF text translation support

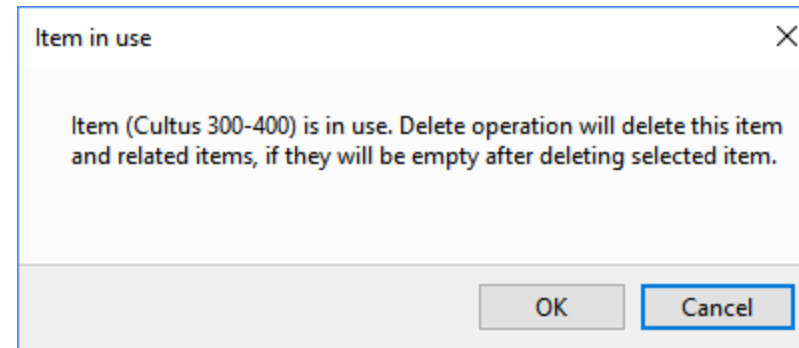
Manager now support the XLIFF format for translations. Text repository can now be used to export and import texts based on XLIFF. Also, texts can be imported in the import repository.



Delete and remove unused data

Manager now allows to delete information that is in use. The function will remove the information from all the places where it is used.

Manager will also allow to delete all unused information in a repository.



More things...

- Order row information is now also shown under MyOrders, not only in Admin.
- It is possible to configure web to show or hide toolbar, header and footer.
- It is possible to place permissions on replacements function so that only selected users get access to this information.
- Home button can point to external site, any URL.
- Custom menus can be placed in toolbar.
- Status monitoring now possible by calling a URL.

Number	Name
i B0260751	BRACKET COUNTER SUPPORT WOOD PRIMED
User's view when adding part to order	
Catalog	
Catalogue Identity	PHW-AT-0119-B
Part assembly	
Part assembly identity	
Test,	

